

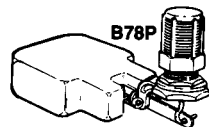
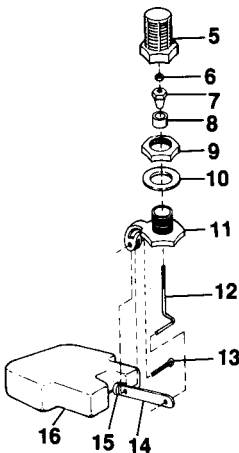
INSTRUCTIONS AND REPAIR PARTS LIST

WPD20 and MPD20 SIX HOLE PIG DRINKER

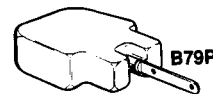
READ ALL DIRECTIONS CAREFULLY BEFORE BEGINNING INSTALLATION

REPAIR PARTS LIST - See Exhibit A on reverse side and see Valve components below for location of parts

Ref. No.	Part No.	Description	Quantity
1	WPD60	WPD20 Tank, POF	1
2	WPD61	WPD20 Base, POF, Blue	1
1	MPD60	MPD20 Tank, Brower	1
2	MPD61	MPD20 Base, Brower, Red	1
3	WPD62	Caplug, 5 1/2", Plastic	1
4	WPD63	Nylon Rope, 1/8", 12" long	1
	WPD64	Hardware pack assembly, includes those items with *	
	B78P *	Valve and Float Assembly, Includes Ref. Nos. 5, 6, 7, 8, 9, 10, 11, 12, 13, 14, 15 & 16	
	B77P	NOTE: Valve Only, Includes Ref. Nos. 5, 6, 7, 8, 9, 10, 11, 12	1
	B79P	NOTE: Includes Ref. Nos. 14, 15, and 16	
	B81	NOTE: Includes Ref. 6, 7, and 12	
5	A15P *	1 1/4" Hex Delrin Screen	1
6	OF51 *	6-32 Hex Machine Screw Nut, Brass	1
7	B80P *	Cone, Plastic	1
8	B82 *	1/2" ID x 7/8" OD Washer, Rubber	1
9	B83 *	3/4" Conduit Locknut, Zinc	1
10	A19 *	1 1/2" x 1 1/16" Washer, Leather	1
11	B84P *	Valve Body, Plastic	1
12	3B1 *	Hook Rod	1
13	B100 *	1 x 1/8" Cotter Pin, Brass	1
14	W80B11P *	Float Arm, Plastic	1
15	OF116 *	1/4" External Tooth Lockwasher, SS	1
16	WP112 *	Float, Polyethylene	1
17	OP223 *	Plug, 3/4" OD, Nylon	1



B78P Plastic Valve and Float



B79P Plastic Float with Arm

B79P includes:
Ref. Nos. 14, 15 and 16

B81 Hook Rod, Cone and Nut Assembly

B81 includes:
Ref. Nos. 6, 7 and 12



PO BOX 2000 • HOUGHTON, IOWA 52631 • USA
PHONE 319-469-4141 FAX 319-469-4402

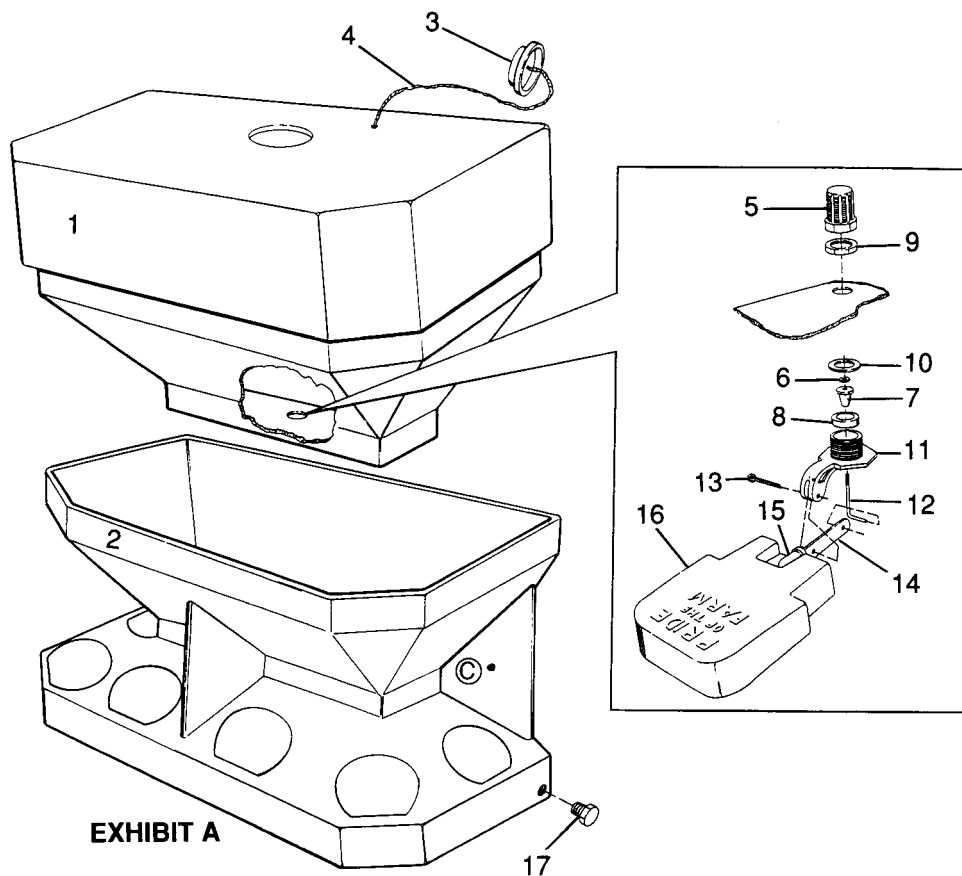


EXHIBIT A

NOTE ABOUT LOCATION © :

There are 2 wall-mounting holes on the vertical ribs on each side of the base. If you use these holes to mount to a partition fence or wall, use flat washers under the bolt heads. Don't use wire to tie base.

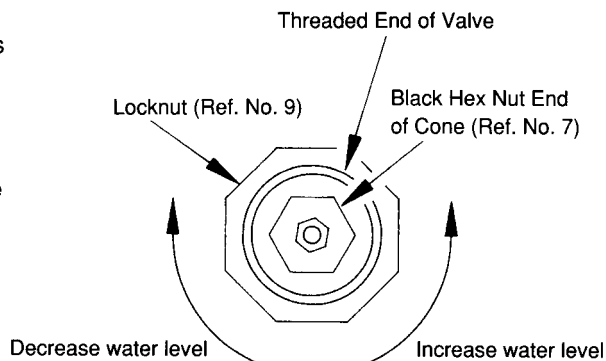


EXHIBIT B

ASSEMBLY INSTRUCTIONS

STEP 1. Check the materials received against the parts list to ensure that all parts are present.

STEP 2. Turn the tank on its side. Locate the B78P Valve and Float Assembly. Remove the plastic filter screen (Ref. No. 5), and locknut (Ref. No. 9). Insert the threaded portion of the valve through the hole in the tank, leaving the float on the outside bottom. Make sure the valve float is turned parallel with the length of the tank. Thread the locknut onto the valve and tighten.

CAUTION: Do not overtighten or you may damage the valve.

STEP 3. After the Valve and Float assembly is secure, thread the plastic filter screen onto the valve. This only needs to be finger tight.

STEP 4. Attach rope (Ref. No. 4) to cap (Ref. No. 3) and attach rope to the tank as shown.

STEP 5. Insert threaded nylon plug (Ref. No. 17). Hand tighten.

STEP 6. Place tank in base.

STEP 7. Fill the tank with enough water to cover the plastic filter screen. When full, the recommended water level is 1" below the top edge of the base. To increase the water level, remove the plastic filter screen from the valve and turn the black plastic hex nut end of the B80P Cone (Ref. No. 7) counter-clockwise. See Exhibit B. To decrease the water level, turn the end of the B80P Cone clockwise. After valve adjustment, be sure to replace the plastic filter screen on the valve.

STEP 8. Note the gallon markers running from 12 gallons to 20 gallons on the right hand side of the tank. Filling to within 1" of the top edge of the base will result in the gallons indicated by the markers.